



“Provide quality products, competitively priced and delivered on time with total customer satisfaction. A simple promise in a complex world.”

Gear Keeper Retractors are built by Hammerhead Industries, Inc., the world’s leading manufacturer of personal tethering equipment including retracting lanyards for tools, gear and instruments. Covered by numerous patents, Gear Keeper products are precision-made systems that keep gear and instruments safe, secure and close at hand.

There is nothing random about our Quality. Our Guarantee.

All of the company’s products are built “Hammerhead Tough” in the USA. Hammerhead Industries warrants its products against manufacturing defects in workmanship and materials. If you are not satisfied with the quality or performance of any Hammerhead product, we will replace it or refund your money within 30 days after purchase through your original dealer or retailer. The warranty is void if the product has been abused beyond normal wear and tear or used for purposes other than intended.

To find a dealer near you or for more information about any Gear Keeper products, contact Customer Service.

Hammerhead Industries Inc., 1501 Goodyear Avenue, Ventura, CA 93003

Call: (888) 588-9981 or visit www.gearkeeper.com



Hammerhead Industries, Inc. Ventura, CA • Toll FREE: (888) 588-9981 (805) 658-9922 • Fax: (805) 658-8833
Web Site: www.GearKeeper.com • E-Mail: info@GearKeeper.com



SCUBA Products

Retractable Gear Attachment Systems

First engineered for SCUBA diving, the Gear Keeper is a rugged, retractable gear attachment system, designed to utilize and protect gear in **severe environments with maximum break strength and durability.**

The Gear Keeper is at the core of an extensive product line that boasts an impressive array of benefits and features: a **patented flushing system** that clears sand and debris from the unit, is **salt-water proof**, and will withstand **high-temperature** environments; a **patented Q/C Connector System** that provides quick and easy connection/disconnection of gear.

The RT3 series features **80# break-strength** and uses Spectra/Nylon line. The RT2 series and the RT4 series features **60# break-strength**. The RT5 Series Micro features a **40# break-strength** and uses a Spectra/Nylon line. All series feature high-impact housing, multiple spring forces and multiple mounting options.

All SCUBA retractors feature the exclusive **(Quick Connect) System** that allows gear to be easily disconnected from the Gear Keeper® while keeping gear close at hand and reducing the overall length of the tethering system.

Choosing the right Gear Keeper is easy because they’re packaged by application (console, flashlight, etc.): the right force, mounting option, and accessories needed.

Gear Keepers are Designed for Harsh Salt Water Environments

To extend retractor life in salt water environments, we recommend rinsing the unit after each use to prevent the formation of salt crystals on metal components.

Gear Keeper Retractors Systems are designed with a patented flushing system that allows for easy cleaning as well as flushing sand and debris from internal mechanisms.

Manual Flushing Instructions:

Operate unit in fresh water (extending and retracting) for 5 to 10 cycles.

If unit is packed with sand or debris, submerge unit in fresh water with line facing upward. Allow unit to fill with fresh water. Turn unit so line faces down and operate rapidly 5 to 10 times. Repeat if necessary.



■ Brass Snap Clip Mount

Also available in:
Plastic Snap Clip Mount
Mounting Bracket

■ High-Impact Case

■ Patented
Flushing System
Salt Water Proof

■ Spectra/Nylon Line

■ Multi-Force Options
12 oz, 24 oz

■ Quick Connect-II (Q/C-II)
w/ Pivot-Ball Connection



**Grab your gear, use it, let it go —
it retracts back every time!**

Gear Keeper makes whatever you’re doing easier while preventing loss or damage to your valuable gear.



Hammerhead Industries, Inc. Ventura, CA • Toll FREE: (888) 588-9981 (805) 658-9922 • Fax: (805) 658-8833
Web Site: www.GearKeeper.com • E-Mail: info@GearKeeper.com

Console Retractors *Keeps console close at hand, easy to use!*

No more searching for your console... It's always secured in the same place—never dangles or drags on the reef.



Locking Console Retractors Force: 24 oz. Extension : 32"



■ **Locking GK Deluxe** (\$28.49)
RT3-5913
Snap Clip

Deluxe unit includes extra Lanyard for consoles that don't have any easy connection point

Longer extension allows console to be secured in the traditional area near the waist



■ **Locking GK Basic** (\$25.99)
RT3-0013
Snap Clip



■ **Locking GK Brass Bolt** (\$29.99)
RT3-0083
Brass Bolt



■ **Locking GK SS Snap** (\$29.99)
RT3-0093
Stainless Snap

Mini Console Retractors Force: 24 oz. Extension : 18"



Snap Clip Mount is the most common version. Easily connects to D-ring of BC

Large SS gate rotating Snap Clip attaches to the large BC D-rings

■ **Mini GK Console** (\$21.99)
RT4-5913 Heavy Duty
Snap Clip

More compact unit for mounting console to chest area



■ **Mini GK Console Combo Mount** (\$21.99)
RT4-5973 Combo
Snap/Threaded Stud

Combo Mount includes two mounting systems in one package. Allows for the most versatile gear configuration

Stainless Steel Threaded Stud: The stud penetrates straps or pockets, screws into back of Gear Keeper Retractor. This allows the retractor to be mounted just about anywhere. Ideal for custom installations where the location of a D-ring is not convenient.

Snap Clip Mount: Snap Clip for easy connection to D-rings. Removeable when using Stud Mount

Small Tool Retractors



Recommended for slates, knives, lobster gauges



■ **Snap Clip Mount** (\$20.99)
RT4-0040 Force: 3 oz. Ext : 36"
RT4-0041 Force: 6 oz. Ext : 36"

■ **Threaded Stud Mount** (\$20.99)
RT4-0020 Force: 3 oz. Ext : 36"
RT4-0021 Force: 6 oz. Ext : 36"

Smart Phone Retractors

Never lose your expensive smart phone



■ **Combo-Mount Snap Clip / Threaded Stud** (\$20.99)
RT5-5470 Force: 3 oz. Ext : 36"

*Compact - Fits into pocket along with phone
Light retraction force makes phone use easy*

Loss protection when shooting photos, video & navigating

Flashlight Retractors *Best way to secure and use a flashlight while diving*

Flashlight is easy to find, easy to use... Does not inhibit your hands like a wrist lanyard... Does not drag and dangle like a coiled lanyard

Locking Flashlight Retractors Force: 12 oz. Extension : 42" Lights 3C to 8D, Rechargeables & Cameras



■ **Locking GK Deluxe** (\$29.99)
RT3-5912
Snap/Bracket

Deluxe unit includes extra Lanyard for difficult connections and a mounting bracket for attaching to BC straps or weight belts

Proper retraction force is essential for flashlight applications...too much force for heavy lights will fatigue the user

Locking mechanism is designed for securing light on land...when diving, unlock unit and the moderate 12 oz retraction force will easily secure a flashlight or camera without fatiguing the diver

Locking the Gear Keeper in the extended position is not advised...it eliminates retraction benefits

Lock it on land; Unlock under water



■ **Locking GK Basic** (\$25.99)
RT3-0012-A
Snap Clip



■ **Locking GK Brass Bolt** (\$29.99)
RT3-0082
Brass Bolt



■ **Locking GK SS Snap** (\$29.99)
RT3-0092
Stainless Snap

Medium Flashlight Retractor Force: 16 oz. Extension : 22"
Lights 3C to 8AA



■ **Mini GK Flashlight** (\$20.99)
RT4-5914
Heavy Duty Snap

*Snap Clip Mount is the most common version. Easily connects to D-ring of BC
Large SS gate rotating Snap Clip attaches to the large BC D-rings*

Small Flashlight Retractor Force: 9 oz. Extension : 32"
Lights 4AA to 2C & Single Computer/Compass Modules



■ **Mini GK Flashlight** (\$20.99)
RT4-5912
Heavy Duty Snap



■ **Mini GK Flashlight Combo Mount** (\$20.99)
RT4-5972 Combo
Snap/ Threaded Stud

Combo Mount includes two mounting systems in one package. Allows for the most versatile gear configuration

Stainless Steel Threaded Stud: The stud penetrates straps or pockets, screws into back of Gear Keeper Retractor. This allows the retractor to be mounted just about anywhere. Ideal for custom installations where the location of a D-ring is not convenient.

Snap Clip Mount: Snap Clip for easy connection to D-rings. Removeable when using Stud Mount

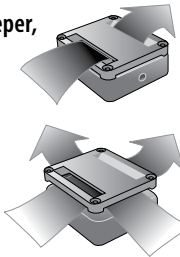
RT3 Mounting Bracket



With bracket attached to Gear Keeper, slide weight belt through bracket

Sandwich webbing between Gear Keeper & bracket (either horizontally or vertically). Screw bracket to retractor

1-0016-03 (\$3.99)



Micro Retractors 2.5 oz./36"

*Recommended for slate pencils, knives, lobster gauges & whistles
40# Break Strength High-Tensile Spectra/Nylon Line*



■ **RT5-5901**
Snap Clip
(\$14.99)



■ **RT5-5902**
Threaded Stud
(\$14.99)



■ **RT5-5906**
Carabiner
(\$14.99)